

Cable Glands MaxgripX - Maximum Grip with advanced design

Material: Adopting Polyamide (PA6), PA6 FR & PPCP for the plastic parts, and interior and exterior seal is TPE or PVC .

Working temperature: -40°C to 90°C in static state, instantaneous heat-resisting up to 100°C , -20°C to 70°C in dynamic state, instantaneous heat-resisting up to 90°C

Characteristics: Superior Grip & Locking Mechanism,IP68 Waterproof & Dustproof,Innovative Collar & Step Washer Design,Enhanced Structural Strength & Easy & Secure Installation.

Cable Gland PG Thread

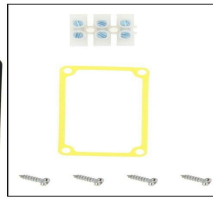
| Thread Size | Wrench size MM | Cable Entry "A" in MM | Dim. "B" MM | Dim. "C" MM | Dim. "D" MM | Dim. "E" MM |
|-------------|----------------|-----------------------|-------------|-------------|-------------|-------------|
| PG - 7 | 17.00 | 3.00 - 6.00 | 13.40 | 5.70 | 12.40 | 10.70 |
| PG - 7 | 17.00 | 3.00 - 6.00 | 13.40 | 5.70 | 12.40 | 15.30 |
| PG - 9 | 22.00 | 4.00 - 8.00 | 17.30 | 5.70 | 15.00 | 10.70 |
| PG - 9 | 22.00 | 4.00 - 8.00 | 17.30 | 5.70 | 15.00 | 15.00 |
| PG - 11 | 24.00 | 7.00 - 10.50 | 19.30 | 6.00 | 18.40 | 11.20 |
| PG - 13.5 | 27.00 | 7.50 - 12.50 | 20.00 | 6.20 | 20.20 | 11.00 |
| PG - 16 | 30.00 | 8.00 - 14.00 | 22.00 | 6.50 | 22.40 | 12.20 |
| PG - 19 | 30.00 | 8.50 - 14.00 | 22.00 | 6.50 | 23.80 | 12.20 |
| PG - 21 | 35.00 | 13.50 - 18.50 | 25.50 | 7.20 | 28.00 | 12.50 |
| PG - 29 | 45.00 | 17.00 - 24.50 | 27.50 | 8.30 | 36.80 | 12.00 |
| PG - 36 | 58.00 | 21.00 - 30.00 | 30.00 | 7.50 | 47.00 | 15.00 |
| PG - 48 | 70.00 | 38.00 - 45.00 | 39.20 | 8.10 | 59.00 | 15.70 |

Cable Gland Metric Thread

| | | | | | | |
|-----------|-------|--------------|-------|------|-------|-------|
| M12*1.5 | 17.00 | 3.00 - 6.00 | 13.40 | 5.80 | 11.80 | 10.50 |
| * M12*1.5 | 17.00 | 4.00 - 8.00 | 17.30 | 5.80 | 11.80 | 9.10 |
| M16*1.5 | 22.00 | 4.00 - 8.00 | 17.30 | 5.80 | 15.80 | 10.50 |
| * M16*1.5 | 22.00 | 7.50 - 10.50 | 19.10 | 5.80 | 15.80 | 10.20 |
| M25*1.50 | 32 | 7.00 - 17.00 | 20.00 | 6.20 | 24.90 | 8.00 |

* Bigger entry Cable glands

Colours :- Black Light grey other colours available upon request.



JUNCTION BOX SMALL

Accessories

JUNCTION BOX SMALL 1 IN 1 OUT WITH GLAND

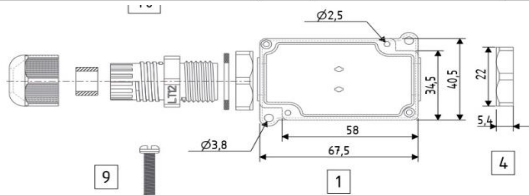


Product Parameters -

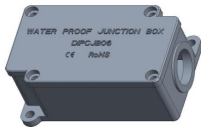
Rated Voltage : 450V AC/DC
Wire section : 2C,3C,4C,5C, 0.5mm² - 4.0 mm²
Waterproof lever : IP68 (IPX8 : 4M : 120H)
Operation Rating : -30°C to +95°C
Certificate : CE & RoHS

Product Parts Introduction :

| S.NO. | PART NAME | QTY. | MATERIAL | REMARKS |
|-------|--|------|----------------|---------|
| 1. | JUNCTION BOX BOTTOM 1 IN 1 OUT (40.5X67.5) | 1 | PC BLACK | |
| 2. | JUNCTION BOX TOP (41.5X68.5) | 1 | PC BLACK | |
| 3. | JUNCTION BOX TOP GASKET | 1 | SILICON RUBBER | |
| 4. | PG-9 NUT | 2 | NYLON PA6 | |
| 5. | PG-9 NUT WASHER | 2 | PVC | |
| 6. | PG-9 BODY LT-12MM | 2 | NYLON PA6 | |
| 7. | PG-9 BODY WASHER | 2 | PVC | |
| 8. | PG-9 CAP | 2 | NYLON PA6 | |
| 9. | SCREW | 4 | MS | 4X12.5 |
| 10. | TERMINAL BLOCK- PA 10H -3 POLE | 1 | NYLON PA6 | |



JUNCTION BOX SMALL 1 IN 1 OUT W/O GLAND

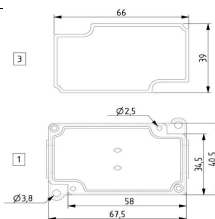


Product Parameters -

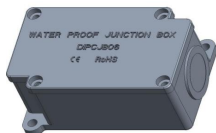
Rated Voltage : 450V AC/DC
Wire section : 2C,3C,4C,5C, 0.5mm² - 4.0 mm²
Waterproof lever : IP68 (IPX8 : 4M : 120H)
Operation Rating : -30°C to +95°C
Certificate : CE & RoHS

Product Parts Introduction :

| S.NO | PART NAME | QTY. | MATERIAL | REMARKS |
|------|---------------------|------|----------------|---------------|
| 1. | JUNCTION BOX BOTTOM | 1 | PC BLACK | |
| 2. | JUNCTION BOX TOP | 1 | PC BLACK | |
| 3. | GASKET | 1 | SILICON RUBBER | |
| 4. | SCREW | 4 | SS | M3*0.5(L=8MM) |



JUNCTION BOX SMALL CLOSED 1 IN 1 OUT W/O GLAND

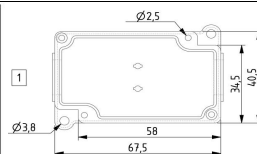


Product Parameters -

Rated Voltage : 450V AC/DC
Wire section : 2C,3C,4C,5C, 0.5mm² - 4.0 mm²
Waterproof lever : IP68 (IPX8 : 4M : 120H)
Operation Rating : -30°C to +95°C
Certificate : CE & RoHS

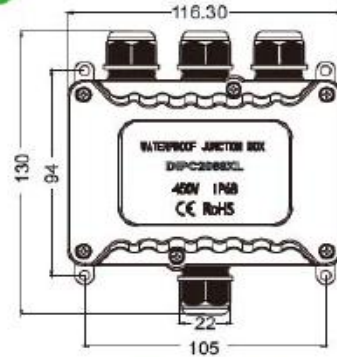
Product Parts Introduction :

| S.NO | PART NAME | QTY. | MATERIAL | REMARKS |
|------|---------------------|------|----------------|---------------|
| 1. | JUNCTION BOX BOTTOM | 1 | PC BLACK | |
| 2. | JUNCTION BOX TOP | 1 | PC BLACK | |
| 3. | GASKET | 1 | SILICON RUBBER | |
| 4. | SCREW | 4 | SS | M3*0.5(L=8MM) |



Junction Box XL

IP68 Junction Box XL



Specifications

| | |
|-----------------------------|-----------------------|
| Rated Voltage | 450V |
| Rated Current | 24A |
| Wire Section | 0.5-4 ² mm |
| Outer Cable Diameter | M20:5-9mm,9-12mm |
| Temperature Range | -40°C to 105°C |
| IP Code | IP68 |
| Housing Materials | Nylon 6FR/ 94-V2 |
| Contact / Terminal Material | Brass |
| Screw Material | SS 304 |

Part No

| | |
|----------|------------|
| Part No. | DIPC2068XL |
|----------|------------|

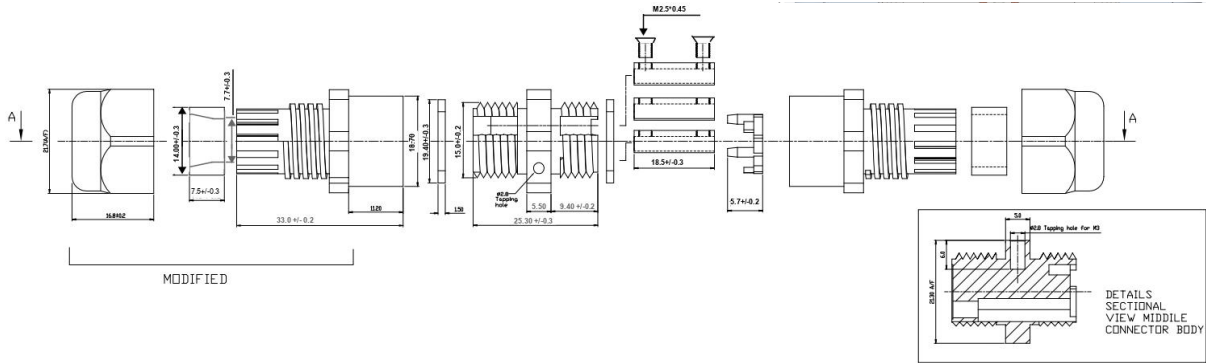
**TECHNICAL SPECIFICATIONS OF CONNECTION DEVICE
 (IP68 CONNECTOR)**

1. Model : IP 68 CONNECTOR DIP001

Parameters :



| | |
|-------------------------------------|------------------------------------|
| Rated insulation voltage : | 450 VAC |
| Rated connecting capacity : | 4.0 mm ² |
| Rated connecting range : | 0.5 - 4.0 mm ² |
| IP Degree : | IP 68 (after proper installation) |
| Type of terminal : | Screw - type , pillar |
| Number of terminal : | Multyway , 3 |
| Kind of connector : | Rigid / Flexible |
| Ambient temperature range : | - 20 to 100° C |
| Protection against electric shock : | With |
| Means of fixing : | Without |
| Diameter of screw : | M 2.5*0.45 |
| Resistance of heat and fire : | FR V2 |
| Material of the cable gland : | Non - metallic |
| Mechanical properties : | With cable anchorage (Type A) |
| Sealing system : | With a single orifice seal |
| Remarks : | IP 68 : 4m , 120 h |



**TECHNICAL SPECIFICATIONS OF CONNECTION DEVICE
 (IP68 CONNECTOR)**

2. Model : IP 68 CONNECTOR 5 PIN (' T ' TYPE)

PARAMETERS :

- 3 Way Connector
- 2 Pole to 5 Pole Capability
- IP68 2 Bar
- Terminations: Screw Fixing

Wire Cable Specification : 5mm (min) ~ 14mm (max)

Additional information

| | |
|---------------------|-------------------|
| Weight | 0.10 kg |
| Product Type | Accessory |
| Dimensions | 117x 90 x Ø 30 |
| Finish | Black |
| Input Voltage | 240 - 430 VAC |
| IP Rating | IP68 |
| Accessory Type | CONNECTOR |
| Material | PA6 FR UL94 V0,V2 |
| Working temperature | - 20°C TO 100°C |



2. Model : IP 68 CONNECTOR 5 PIN (' Y ' TYPE)

PARAMETERS :

- 3 Way Connector
- 2 Pole to 5 Pole Capability
- IP68 2 Bar
- Terminations: Screw Fixing

Wire Cable Specification : 5mm (min) ~ 14mm (max)

Additional information

| | |
|---------------------|-------------------|
| Weight | 0.10 kg |
| Product Type | Accessory |
| Dimensions | 117x 90 x Ø 30 |
| Finish | Black |
| Input Voltage | 240 - 430 VAC |
| IP Rating | IP68 |
| Accessory Type | CONNECTOR |
| Material | PA6 FR UL94 V0,V2 |
| Working temperature | - 20°C TO 100°C |



2. Model : IP 68 CONNECTOR 5 PIN (' STRAIGHT ' TYPE)

PARAMETERS :

- 2 Way Connector
- 2 Pole to 5 Pole Capability
- IP68 2 Bar
- Terminations: Screw Fixing

Wire Cable Specification : 5mm (min) ~ 14mm (max)

Additional information

| | |
|---------------------|-------------------|
| Weight | 0.10 kg |
| Product Type | Accessory |
| Dimensions | 117x 90 x Ø 30 |
| Finish | Black |
| Input Voltage | 240 - 430 VAC |
| IP Rating | IP68 |
| Accessory Type | CONNECTOR |
| Material | PA6 FR UL94 V0,V2 |
| Working temperature | - 20°C TO 100°C |



**TECHNICAL SPECIFICATIONS OF CONNECTION DEVICE
 (IP68 CONNECTOR)**

2. Model : M20 SCREW TYPE IP 68 CONNECTOR 5 PIN

PARAMETERS :

2 Way Connector

2 Pole to 5 Pole Capability

IP68 2 Bar

Terminations: Screw Fixing

Wire Cable Specification : 5mm (min) ~ 12mm (max)

Additional information

| | |
|---------------------|-------------------|
| Weight | 0.060 kg |
| Product Type | Accessory |
| Wire Connect Type | 5 Way |
| Product Type | Accessory |
| Dimensions | 85x Ø 24 |
| Finish | Black |
| Input Voltage | 240 - 450 VAC |
| IP Rating | IP68 |
| Rated Current | 24 A |
| Wire Section | 0.5 TO 2.5 SQ MM. |
| Accessory Type | CONNECTOR |
| Material | PA6 FR UL94 V0,V2 |
| Working temperature | - 20° C TO 100° C |



2. Model : M20 SCREW TYPE IP 68 CONNECTOR 3 PIN

PARAMETERS :

2 Way Connector

2 Pole to 3 Pole Capability

IP68 2 Bar

Terminations: Screw Fixing

Wire Cable Specification : 5mm (min) ~ 12mm (max)

Additional information

| | |
|---------------------|-------------------|
| Weight | 0.040 kg |
| Product Type | Accessory |
| Wire Connect Type | 3 Way |
| Product Type | Accessory |
| Dimensions | 85x Ø 24 |
| Finish | Black |
| Input Voltage | 240 - 450 VAC |
| IP Rating | IP68 |
| Rated Current | 24 A |
| Wire Section | 0.5 TO 4 SQ MM. |
| Accessory Type | CONNECTOR |
| Material | PA6 FR UL94 V0,V2 |
| Working temperature | - 20° C TO 100° C |



**TECHNICAL SPECIFICATION OF CONNECTION DEVICE
(IP 68 CONNECTOR)**

2. Model : M20 "X" TYPE IP 68 CONNECTOR 3 PIN

Product Name - IP 68 "X" CONNECTOR SCREW TYPE

Material - NYLON FR

Colour - BLACK

TYPE - SCREW TYPE

1) AMPERE/VOLTAGE : 24A 450VAC

2) WORKING TEMPRATURE : -40° TO 110°C

3) WIRE RANGE : 0.5 TO 2.5 SQMM.

4) NUMBER OF POLE : 2 & 3 PIN

5) CERTIFICATION : CE, RoHS , ISO 9001:2015, ISO 14001:2015



**TECHNICAL SPECIFICATION OF CONNECTION DEVICE
(IP 68 CONNECTOR)**

2. Model : M20 "T" TYPE IP 68 CONNECTOR 3 PIN

Product Name - IP 68 "T" CONNECTOR PUSH IN

Material - NYLON FR

Colour - BLACK

TYPE - PUSH FIT

1) AMPERE/VOLTAGE : 24A 450VAC

2) WORKING TEMPRATURE : -40° TO 110°C

3) WIRE RANGE : 0.5 TO 2.5 SQMM.

4) NUMBER OF POLE : 2 & 3 PIN

5) CERTIFICATION : CE, RoHS , ISO 9001:2015, ISO 14001:2015



**TECHNICAL SPECIFICATION OF CONNECTION DEVICE
(IP 68 CONNECTOR)**

2. Model : M20 STRAIGHT IP 68 CONNECTOR 3 PIN

Product Name - IP 68 STRAIGHT CONNECTOR PUSH IN

Material - NYLON FR

Colour - BLACK

TYPE - PUSH FIT

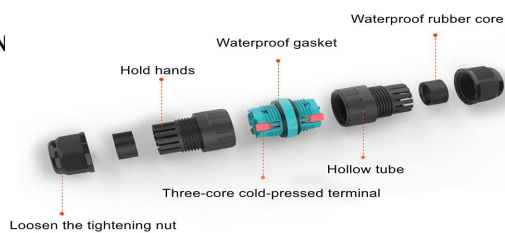
1) AMPERE/VOLTAGE : 24A 450VAC

2) WORKING TEMPRATURE : -40° TO 110°C

3) WIRE RANGE : 0.5 TO 2.5 SQMM.





4) NUMBER OF POLE : 2 & 3 PIN

5) CERTIFICATION : CE, RoHS , ISO 9001:2015, ISO 14001:2015






**TECHNICAL SPECIFICATION OF CONNECTION DEVICE
(M16 PVC IP 68 WIRE CONNECTOR)**

MATERIAL - PVC FR
COLOUR - BLACK
TYPE - PLUG IN
MECHANICAL LIFE : 500 MATCHING CYCLES
CERTIFICATION : CE, RoHS , ISO 9001:2015, ISO 14001:2015

| 2 CORE | 3 CORE | 4 CORE | 5 CORE |
|--|--|--|--|
|  |  |  |  |
| 1) AMPERE/VOLTAGE : 12A - 16A, 440VAC 2) WORKING TEMPERATURE : -40° TO 90°C 3) WIRE RANGE : 0.75 TO 2.5 SQMM. 4) CABLE OD MM. : 6.40, 7.00, 7.20, 7.80, 8.50, 8.70 & 9.70 | 1) AMPERE/VOLTAGE : 12A - 16A, 440VAC 2) WORKING TEMPERATURE : -40° TO 90°C 3) WIRE RANGE : 0.75 TO 2.5 SQMM. 4) CABLE OD MM. : 6.40, 7.00, 7.20, 7.80, 8.50, 8.70 & 9.70 | 1) AMPERE/VOLTAGE : 12A - 16A, 440VAC 2) WORKING TEMPERATURE : -40° TO 90°C 3) WIRE RANGE : 0.75 TO 2.5 SQMM. 4) CABLE OD MM. : 6.0, 6.2 & 7.20 | 1) AMPERE/VOLTAGE : 4A - 7A, 300VAC 2) WORKING TEMPERATURE : -15° TO 70°C 3) WIRE RANGE : 0.5 SQMM. 4) CABLE OD MM. : 7.80, 8.50, 8.70 & 9.70 |

**TECHNICAL SPECIFICATION OF CONNECTION DEVICE
(M20 PVC IP 68 WIRE CONNECTOR)**

MATERIAL - PVC FR
COLOUR - BLACK
TYPE - PLUG IN
MECHANICAL LIFE : 500 MATCHING CYCLES
CERTIFICATION : CE, RoHS , ISO 9001:2015, ISO 14001:2015

| 2 CORE | 3 CORE | 4 CORE | |
|---|---|---|--|
|  |  |  | |
| 1) AMPERE/VOLTAGE : 21A - 60A, 660VAC 2) WORKING TEMPERATURE : -40° TO 90°C 3) WIRE RANGE : 0.75 TO 2.5 SQMM. 4) CABLE OD MM. : 6.0, 6.20, 7.20, 10.60 | 1) AMPERE/VOLTAGE : 21A - 60A, 660VAC 2) WORKING TEMPERATURE : -40° TO 90°C 3) WIRE RANGE : 0.75 TO 2.5 SQMM. 4) CABLE OD MM. : 6.0, 6.20, 7.20, 10.60 | 1) AMPERE/VOLTAGE : 21A - 60A, 660VAC 2) WORKING TEMPERATURE : -40° TO 90°C 3) WIRE RANGE : 0.75 TO 2.5 SQMM. 4) CABLE OD MM. : 7.20 & 10.60 | |